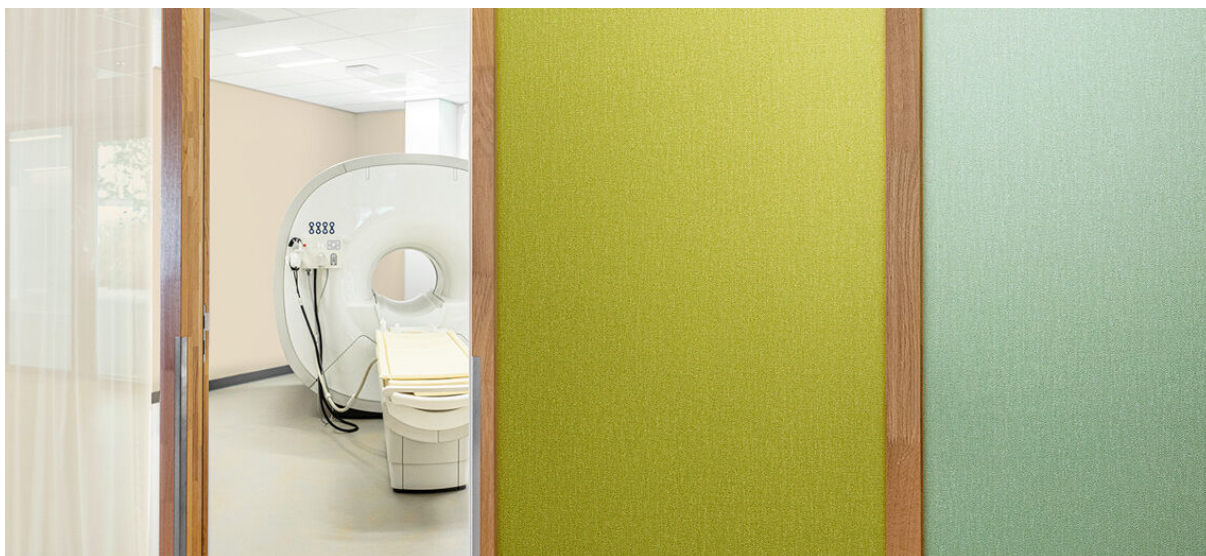


# albert

1103.01 - 1103.32



colección  
**wallcovering**  
**01**  
**vinyl**

descripción  
**semiliso con delicado entramado**

composición  
**capa vinílica estampada con tintas al agua,  
sobre soporte de algodón**

ancho  
**± 130 cm, ± 51/52 inches**

peso  
**± 350 gr/m<sup>2</sup>, ± 15 oz/yd<sup>1</sup>**

absorción del ruido  
**ISO 354**  
alphaw 0.10

combustión retardada  
**EN 13501, B s1 d0**  
**ASTM E84, A**  
**NFPA 286**

permeabilidad al vapor de agua  
**ISO 15106-3 / EN ISO 12572**  
Sd value ± 9 m



**vinyl** COMMITTED TO  
SUSTAINABLE DEVELOPMENT

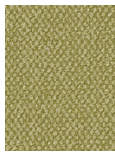
**CE** EN 15102



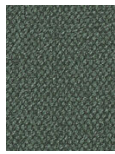
# albert

1103.01 - 1103.32

---



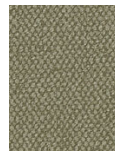
1103.01



1103.02



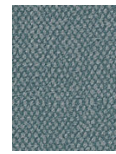
1103.03



1103.04



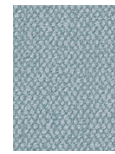
1103.05



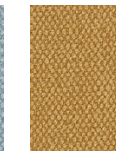
1103.06



1103.07



1103.08



1103.09



1103.10



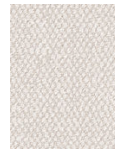
1103.11



1103.12



1103.13



1103.14



1103.15



1103.16



1103.17



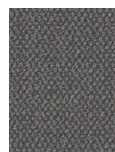
1103.18



1103.19



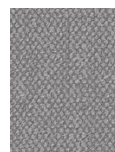
1103.20



1103.21



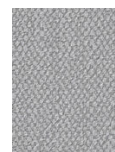
1103.22



1103.23



1103.24



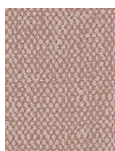
1103.25



1103.26



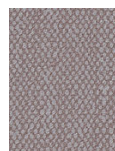
1103.27



1103.28



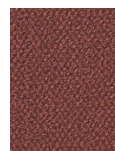
1103.29



1103.30



1103.31



1103.32